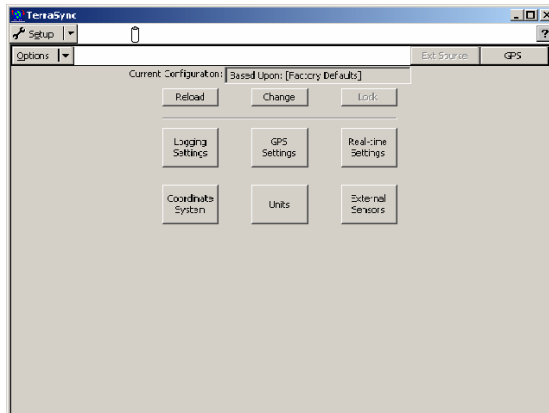


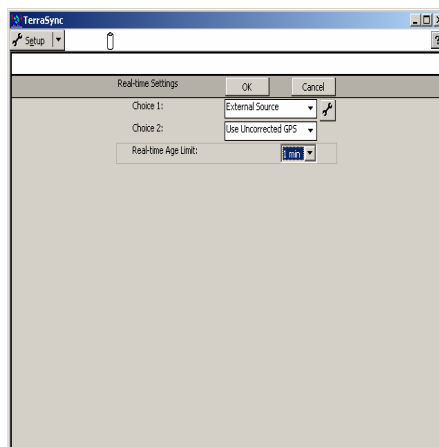
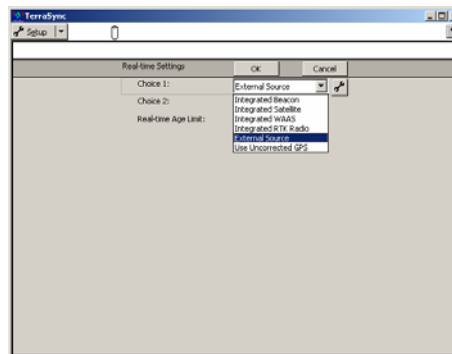
Seiler Instrument Company
GEOXT INTERNET CONNECTION SETUP



1. FROM THE SETUP MENU SELECT “REAL-TIME SETTINGS”

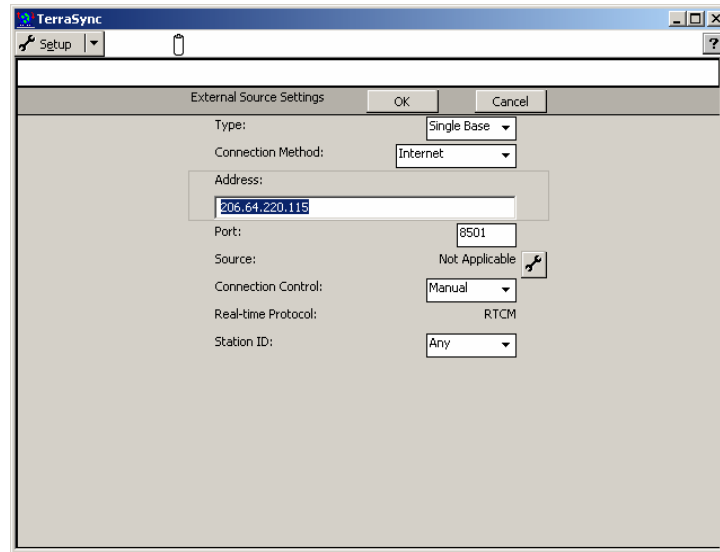


2. CHANGE CHOICE 1 TO “EXTERNAL SOURCE”.
3. CHANGE CHOICE 2 TO “WAIT FOR REAL-TIME”.
4. LEAVE REAL-TIME AGE LIMIT AT 1 MIN



5. CLICK ON THE WRENCH NEXT TO “EXTERNAL SOURCE”.

6. CHANGE CONNECTION METHOD TO “INTERNET”
7. KEY IN THE APPROPRIATE IP ADDRESS AND PORT NUMBER.



8. SELECT “OK”