

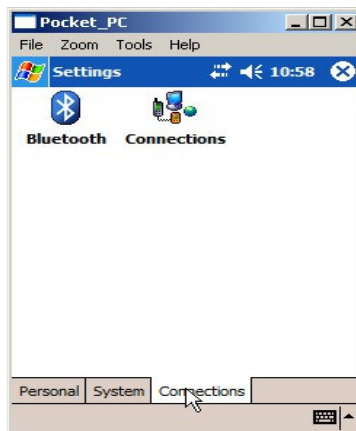
**Seiler Instrument Company**  
**Pocket PC**  
**Network Connection for Nextel Modem**  
**PREPARED BY:**  
**JIM WYANT**



Select *Start>Settings* from the desktop of Pocket PC.



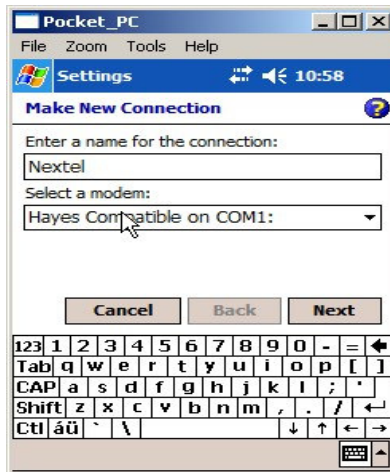
Under the settings menu select the *Connections* tab at the bottom of the screen. Click on the “Connections” icon.



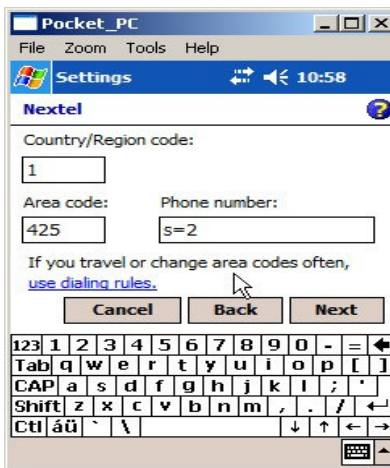
Click on Add a new modem connection.



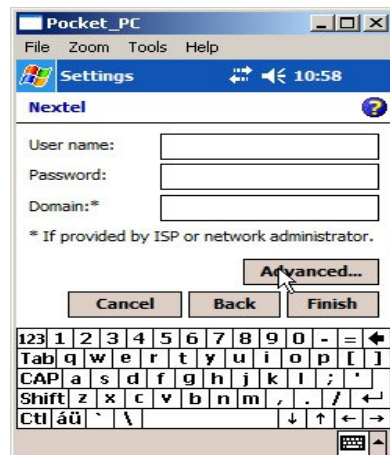
Enter the name of your connection in the “Enter a name for the connection:” dialog box and select the *Next* button.



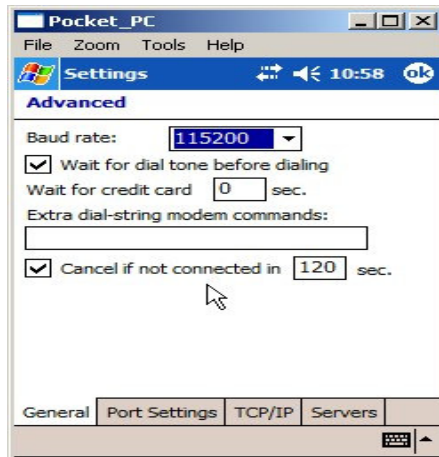
In the *phone number* dialog, enter s=2 and click on the *Next* button.



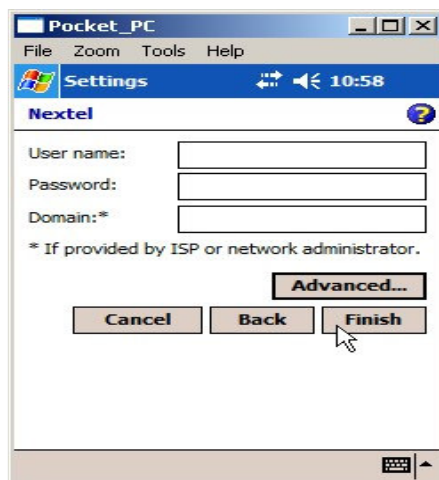
Select the *Advanced* button.



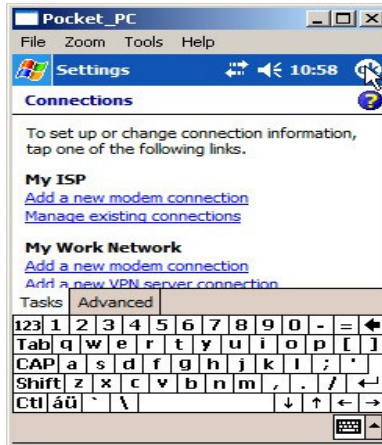
In the Advanced dialog box, change the *Baud Rate* to 115200. Click on the *OK* button in the upper right hand corner.



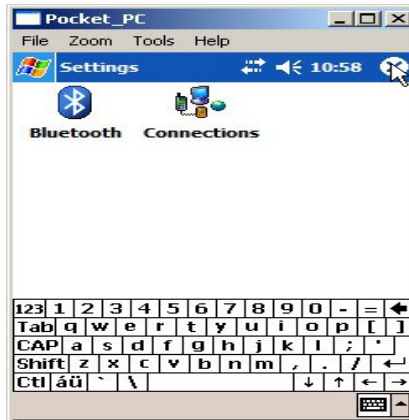
Select the *Finish* button.




Select the *OK* button in the upper right hand corner.



“X” out of the settings box by clicking on the X in the upper right hand corner.



Your connection is now created. To make the dial-up, click the  symbol on the tool bar of the collector. Click on the “s=2” to make the network connection to Nextel.