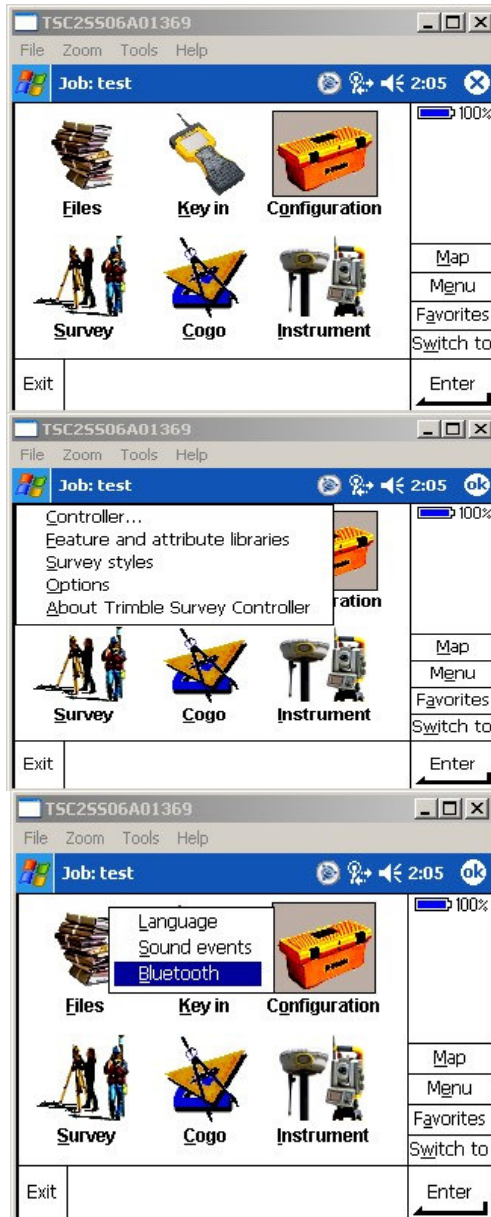


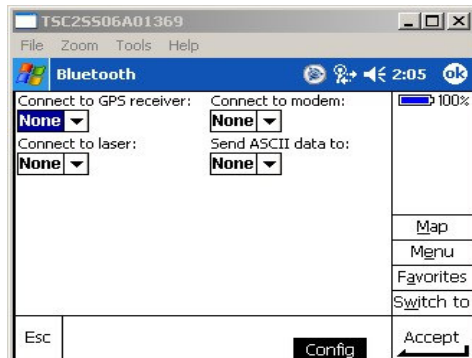
**Seiler Instrument Company**  
**R8/5800 – TSC2 SURVEY CONTROLLER**  
**BLUETOOTH SETUP**  
**PREPARED BY:**  
**JIM WYANT**



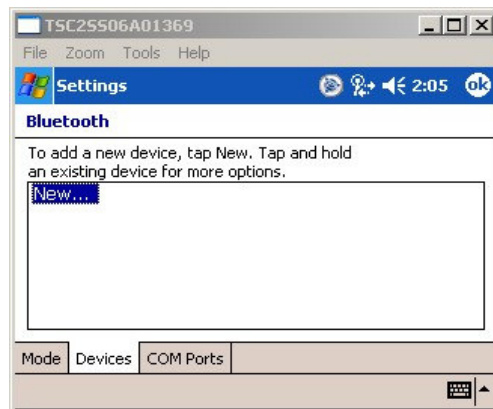
From the main menu of SC, select Configuration>Controller>Bluetooth.  
**Note: Make sure the receiver is powered on!**



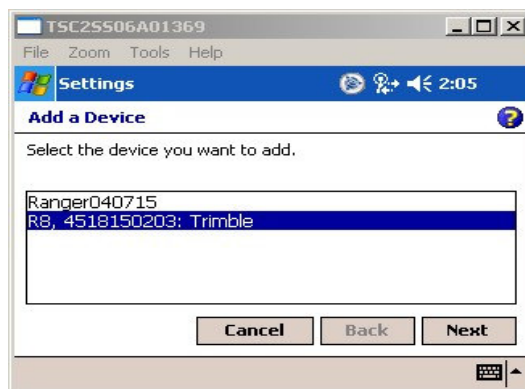
Select the *Config* button at the bottom of the Bluetooth dialog box.



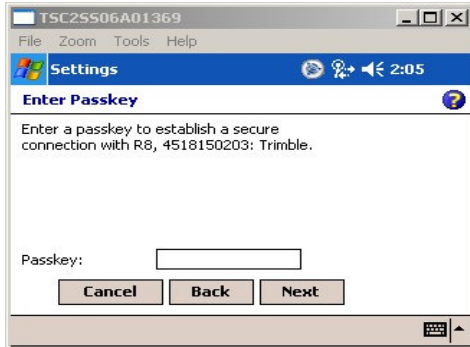
Select the *Devices* tab at the bottom of the screen and select *New*.



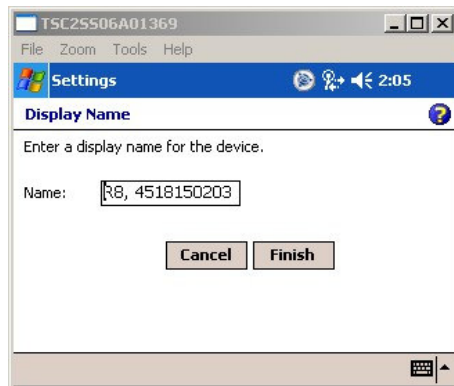
Once the scan is complete, you should see the serial number of your receiver displayed in the dialog box. (The receiver SN is located on the bottom of the GPS receiver). Highlight the receiver SN and select *Next*.



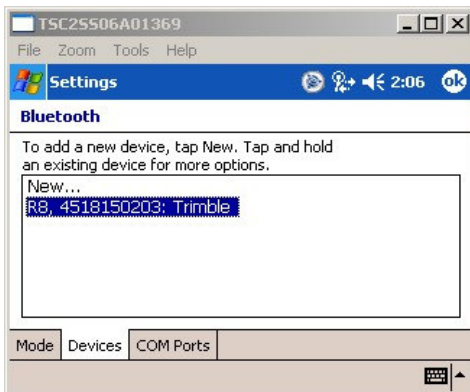
**DO NOT Enter anything in the passkey field.** Simply select *Next*.



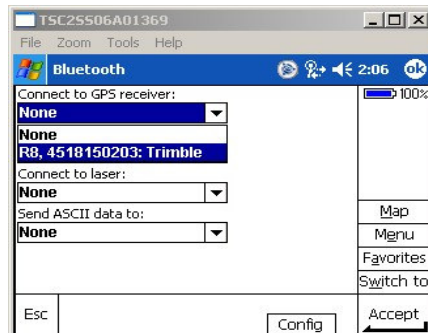
You should see the SN of your receiver in the *Name:* field. Select *Finish*.



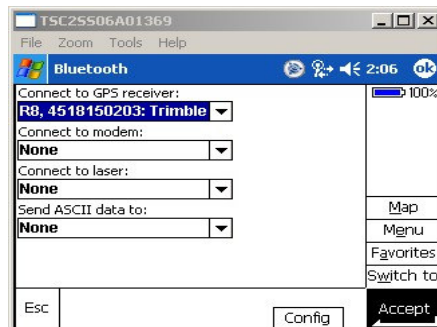
Select *ok* in the upper right hand corner.



Select the drop down menu under *Connect to GPS receiver* and select the serial number for your receiver.



Select *Accept* in the lower right corner.



The data collector is communicating with the receiver when you see the receiver icons on the right side of the data collector screen.

