

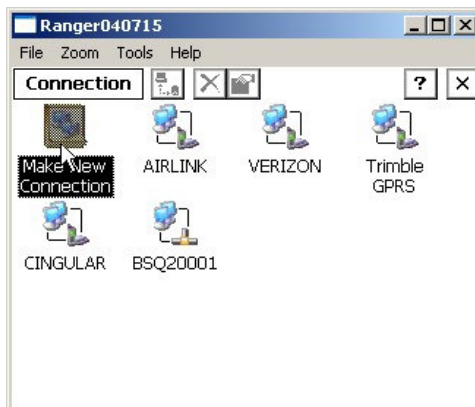
**Seiler Instrument Company**  
**Network Connection setup for**  
**Cingular phones on the TSCE/ACU**  
**Prepared By:**  
**Jim Wyant**



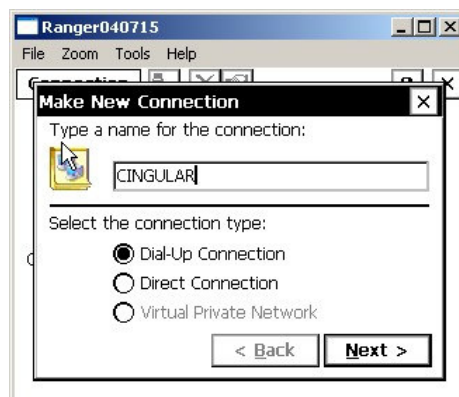
From the windows startup menu select *Start>Settings>Network/Dial-up Connections*.



Double click on *Make New Connection*.



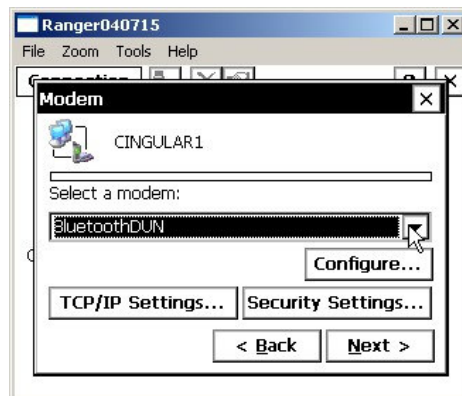
Enter the name of your connection and select *Next*.



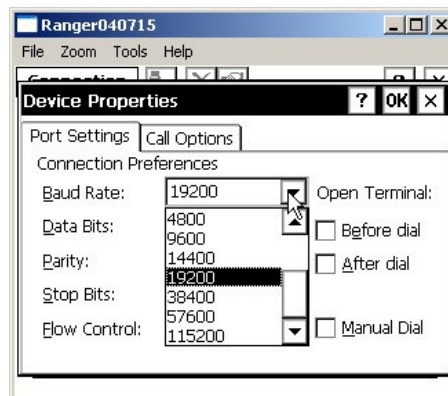
Select the com port of the collector you are connecting the phone to from the drop down menu on the Modem dialog box and select *Next*.



After selecting the data collector port, select *Configure*.



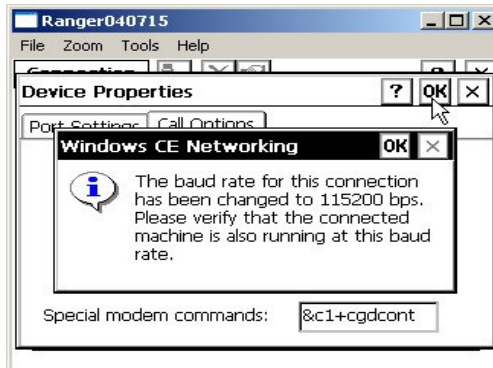
Change the Baud Rate from 19200 to 115200.



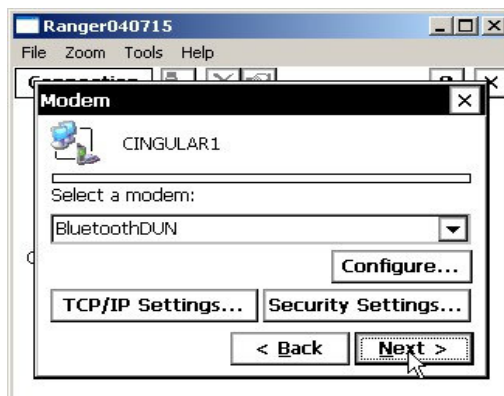
Select the “Call Options” tab and enter `&f&d2&c1+cgdcont=1,"IP","isp.cingular”` EXACTLY as shown in the *Special modem commands* field.



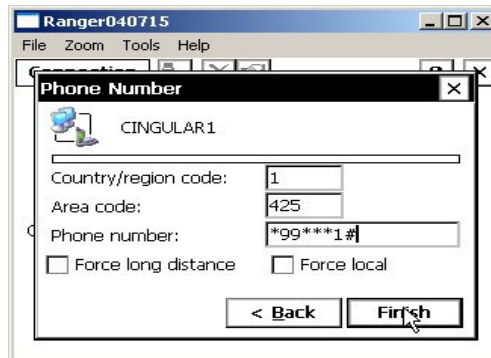
OK through the “warning” box.



Select the *Next* button.



Enter **\*99\*\*\*1#** in the *Phone number* field. You do not need to change the Contry/region code, or the Area code.



Enter **ISP@CINGULARGPRS.COM** (all caps) in the *User Name* field. Enter **CINGULAR1** (all caps) in the *Password* field. Your network connection to access the cingular network is now created. Once your phone is connected via Bluetooth or Cable, enter your password and click *Connect*.

